



Patricia Pilgrim Nursery News Bulletin



**Autumn/Winter
Edition
2007/2008**

**Graham and Fay
Pilgrim**

Nursery Principals



**Stephanie
Barry**
Nursery Manager

Kathmandu is the arrival point for visitors in Nepal. This small mountain sheltered valley is the historic center and the capital of Nepal. This is the place where kingdoms rose and fell, palaces and temples are built and rebuilt, art and cultures are refined and protected.

Kathmandu City is the largest in Nepal and is surrounded by green hills and slopes. Scattered around the valley are hundreds of temples and shrines, traditional villages and agriculture scenes of timeless beauty. This tiny kingdom is not only home to some of the friendliest people in the world but to eight of the world's highest peaks including Everest.

Every year Nepal sees thousands of pilgrims embarking on religious pilgrimages to pay homage and respect to their Gods.

What's all this to do with the Nursery you may ask?

Well, not a lot really!

But I thought I could perhaps share with you all, just a small part of what for me will be a great Christmas present.

This Christmas there will be two more 'Pilgrims' arriving in Kathmandu – myself and my son

Jeremy! - some of you may know that Jeremy lives in Australia and I only see him very occasionally.

As a once in a lifetime opportunity, this Christmas, we have decided to brave the elements together, experience the thinning of oxygen (at an age just when I need it most!), suffer the blisters and burning muscles and to trek some of the most renowned and remote places in the lower reaches of Mt. Everest (sometimes known as Chomolungma or Qomolangma).

So, if I don't see you again before Christmas have a good one and when you're getting that turkey ready, you can envy me sitting in my little tent with my bowl of hot soup bonding with my son and some Sherpas!

Best Wishes for Christmas and the New Year.

Graham Pilgrim

Don't worry everyone! - while Graham is off fulfilling his dream, and trying to get me a picture of the Abominable Snowman, I'll still be here 'holding the fort' - Happy Christmas and New Year from me too.

Fay Pilgrim

A few words from manager Stephanie Barry.....

“ I’ve now been here for over a year and have enjoyed every minute. I’m looking forward to the implementation of The Early Years Foundation Stage in September 2008”



I have now been here for over a year and I feel as if I have been here for ever. We have had some successful times which include our OFSTED inspection back in March and the sudden influx of children over the last few months.

We are now about to embark on a new era which is The Early Years Foundation Stage. This is the new government curriculum for under 5's which nurseries need to implement in September 2008.

Terri (my deputy) and I have already completed a full day training run by the local Early Years advisors and have another day to complete in February next year. We have passed what we learnt on to the staff and everyone seems positive about the change.

You as parents may not notice any changes as the curriculum is based around what all nurseries do well already. The development files may change slightly because the curriculum goes from nought to 60 months plus. This means that the whole nursery is following the same curriculum and not 2 as we are at the moment. If you are interested to find out more about the above there is a web site: www..standards.dfes.gov.uk/eyfs.

A couple of weeks ago some of the staff came in one Saturday and completed their Early Years First Aid Training - so now nearly all staff members at the nursery have some form of First Aid Training.

Our trainer offered to do a day's training for parents in Child Resuscitation and First Aid. If any parents are interested could you please fill in and return the attached sheet to the office and I will arrange a

suitable weekend or week day. The cost will be about £25 and the training will be held at the nursery.

We have had a number of staff changes since I started at the nursery but things seems to have settled down nicely now. All the staff at the nursery are dedicated members of staff. Tracey and Laura who both work in the under two's unit are studying for their NVQ level 3 and I have just embarked on my Level 4.

I hope you all have a great Christmas and Happy New Year.

Stephanie



Stephanie and Diane's General Admin Page

Diary Dates

Parent consultations:

We held our parent consultations during the week beginning 26 November 2007 and 3 December 2007. Thank you to all those who took time to meet their child's key person and to those who are still going to.

If you still would like to book a time please ask your unit deputy; Terri or Tracey, and they will organize a convenient time.

You may only want to look at your child's development file, which can be arranged. We will just ask you to fill in a sheet with any comments so we can show that we are working with parents.

Photographer:

She visited the nursery on 28 November and took 59 photos. These will be back in time for Christmas.

Christmas parties:

Over 2's = 12 December between 10 - 12.30pm.

Under 2's = 13 December between 2.30 – 4.30pm.



Sickness

Colds / flu / diarrhoea / vomiting

If your child is unwell please don't bring them into nursery to infect all the other children!

If your child has diarrhoea or sickness, please don't forget that they must be away for at **least 48 hours** from their last bout.

Also, your child must be off for 24 hours from the start of any antibiotics or eye drops.

Also we cannot give any unlicensed medicines e.g cough medicine.

Opening and Closing

Please bring your child into nursery at the start of their session (not before) and pick them up promptly at the end.

Don't forget - **late pick-ups will be charged!**

Full day 8am – 6pm

School Day 9.30am - 3.30pm

AM session 9.30am - 12.30pm

PM session 1.30pm - 4.30pm

Cold Winter days

If we should have any snow please remember to contact nursery first to see if we are opening. Not only do you have to venture out, but we must make sure that our staff can also get to the nursery as not all of them live locally. We will endeavour to contact all of you should we have to close.

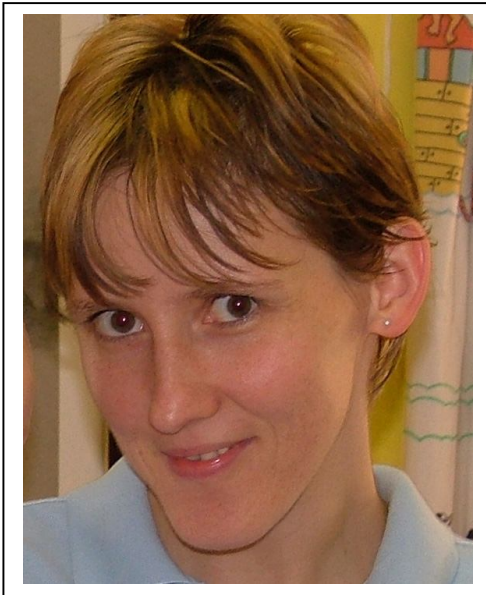
However, even if we have a mild winter when days look bright and sunny, it can still



get very cold - so please do remember that all the children still need to wrap up for garden play – coats, hats, gloves, scarves and Wellingtons etc.

Please ensure all clothing and belongings are labeled to avoid confusion and losses.

News from Betty



Betty – Our Nursery Teacher

Hello every one

Christmas is fast approaching and we are nearly at the end of the autumn term. The children are making good progress and are more enthusiastic than ever. The children who joined us in September settled well and love learning new and interesting things.

We are still very fortunate that we can keep the P.E sessions outside. Can I please remind you to put long trousers and a long top in your child's P.E bag.

Thank you to all those parents who attended the Open Evening on 19th September. It was really useful for me and I hope for you too!

Thank you very much for supporting us by collecting the Tesco Vouchers. If you have any still at home please bring them in to nursery so we can count them and decide what to get next for the nursery.

In the spring term my "new" intake will join me. I am looking forward to getting to know them and to start our sessions together. In January I will organize a joint Open Evening for the parents whose children will join me after Christmas and after the Easter Holiday. It will be an informal meeting where I explain and introduce my work with the children.

As most of you have noticed there are some days when I am not in the nursery. The reason for this is I became a student at the University of York studying for my Masters Degree in Non-Directive Play Therapy. I hope that I will be able to make a positive contribution to the nursery by completing this course. I want to stress that I have no plans to leave the nursery.

Betty

"I can't wait to start working with my 'new intake' children after Christmas"



Early Years Foundation Stage

Terri and Stephanie have already been on one training day and have another in the New Year. The staff have also had a staff meeting to help understand the changes we need to make.

Tesco for Schools

Thanks for your Support!

Many thanks to everyone!

Craft materials needed!

Please can you keep Christmas paper, ribbon etc and bring it into the nursery in the New Year.

Thank you.





Terri is a Deputy Manager and works in the Pre-school Unit

Elf Sing Song

Thursday 20th December 2007 at 3.30pm.
Fancy dress for all as either Elves or Christmas characters.

Sausage rolls and mince pies available after the singing.

Christmas Post Box

This can be found at the front entrance to the unit where children can post their Christmas cards to their friends ready for delivery each day.



Christmas Party Cakes

Please bring in cup cake that your child has decorated to the Christmas Party, 12 December, as we are holding a competition for the best decorated cup cake.

Chinese New Year

To celebrate Chinese New Year the children will have a special Chinese Taster Tea on the 7th February 2008.

Child Comforters

We know that some children need a comforter but could you please try to limit this to only one comforter per child – to be kept in a bag unless needed.



Children's collection arrangements are really important!

Please inform us of any changes in the collection arrangements of your children, such as collection times or alternative collectors e.g. friends and family. It is essential that you let us know BEFORE your child is dropped off in the morning of any changes, as we need a photo and a password from collectors before we will 'hand over' your child!!

We do understand that circumstances can change quickly during the day but you must understand that it is your child's safety we are primarily concerned with. In the event of an emergency please notify the office immediately.

Unplanned Absences

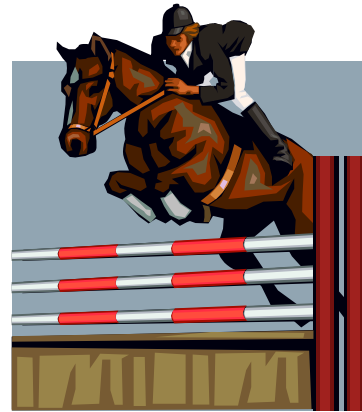
If your child is not going to be present on their normal day(s) due to sickness or any other reason, please let us know in advance if possible but if not then by at least 10.00am on the day.

This stops us getting concerned and also helps us to ensure that the staff to child ratios are correctly maintained.



*Tracey, Trainee
Deputy Manager and
works in the Baby Unit*

Open Day Fundraising



A large thank you to those who joined in the fun at our very successful OPEN DAY in September.

We raised £75 for Cancer Research and £75 for Riding for the Disabled.

Welcome!

We have been very busy in the under two's unit doing all the normal seasonal activities including leaves and stick sticking.

We have also been having great fun trying out some new and exciting types of sensory play such as cornflour, pasta and shaving foam.

We do ask if any parents would like to add to our treasure baskets which contain metal and natural objects, so we can expand on our already well used baskets.

We are also looking for unwanted dressing up clothes as our children love using these.

Can we also remind you that all children need hats, coats and wellies (if walking) as all children go out in the garden to benefit from the wide range of experiences available -please can all of these be labelled clearly and placed on

your child's named peg. Thank you.

Please can we remind you that we don't mind children bringing in comforters to the nursery but a number of children are bringing toys. These can easily be broken or lost when the children tidy up at the end of an activity. The children are also less willing to share their own toys than Nursery toys, which can also be very confusing for young children.

We are all looking forward to our Christmas activities and party, with fun, games and lots of dancing.

Tracey



"We're looking for unwanted dressing up clothes as our children love using these"

The Early Years Foundation Stage: Setting the Standards for Learning, Development and Care for children from birth to five

Early Years Foundation Stage (EYFS) brings together: Curriculum guidance for the Foundation Stage (2000), The Birth to Three Matters (2002) framework and The National Standards of the under 8's Daycare and Childminding (2003), building a coherent and flexible approach to care and learning. All providers are required to use the EYFS to ensure that whatever setting parents chose they can be confident that their child will receive a quality experience that supports their development and learning.

A Unique Child

Every child is a competent learner from birth who can be resilient, capable, confident and self assured.

Positive Relationships

Children learn to be strong and independent from a base of loving and secure relationships with parents and/or a key person.

Enabling Environments

The environment plays a key role in supporting and extending children's development and learning.

Learning and Development

Children develop and learn in different ways and at different rates and all areas of Learning and Development are equally important and inter-connected.

Food for thought!



*Are the children cooking
the mince pies this
year?*

Do you want some??

Christmas Break

Friday 21 December is our last day of opening before the Christmas break and we will close at 6pm promptly.

The nursery will then be closed until **Wednesday 2nd January 2008**.



An interesting Saying

***“Tell me and I will forget
Show me and I will remember
Let me do it and I will
understand”***

Patricia Pilgrim Memorial
Day Care Nursery and
Nursery School

1 Saling Road
Stebbing Green
Gt Dunmow
Essex
CM6 3TD

PHONE:
01371 856594
01371 856702

Email
nm@patriciapilgrimnursery
.co.uk

WEBSITE
www.patriciapilgrimnursery.co
.uk

Edited
by:
Colin
And
Diane

Welcome back.

Leone Parish will be returning to the nursery after Christmas with her son Oliver. She will be based in the over 2's unit.

Emma Loe will also be returning in the New Year with her baby daughter Phoebe Mae and Charlotte. She will be based in the toddlers.

Welcome.

Can we formally welcome, Nicola Keeble and Kerry Waight in the under 2's unit and Donna Abbott in the 2-5 unit. Also Rosalyn Green, Anne Runacre and Sara Hunt who have joined us as bank staff.

***Please send in the attached form about
the days your child will not be
attending the nursery around
Christmas.***

“Childhood – where our future begins”